

## I Applications:

Single-layer BoxMag-Systems are installed into pipings or drop shafts where powder or fine-grained granulate material are separated from magnetizable particles. The protection of mills and further subsequent machines is of primary importance.

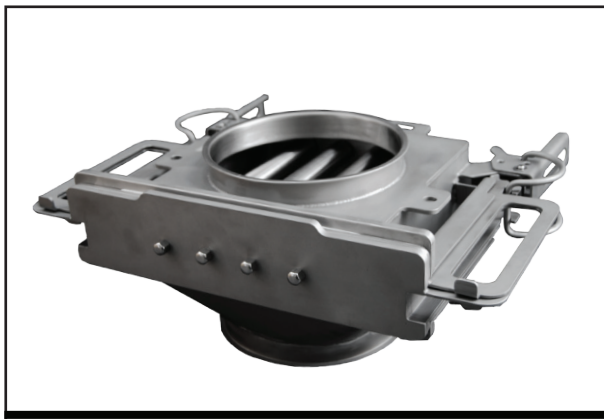
## I Description of functions:

The BoxMag-System's casing is connected to the piping system by flanges, TriClamp-connectors, Jacob-system connections or by rigid weld joints thus ensuring a dust-free and unimpaired product flow in the production plant.

The material to be conveyed flows through the BoxMag-System and is exposed to the strong magnetic field of the installed magnetic filter rods. Even weak magnetic contaminations in the product are seized, attracted by the filter rods and held tight.

# BoxMag

RFM-R single layer



## I Product requirements:

The material to be controlled must be dry, powdery or short-fibred and free-flowing.

## I Housing:

Material: Stainless steel AISI 304

Surface:

Outside blasted with ceramic beads,

Inside smoothed with 180 µm grain

Inlet and outlet with Jacob-System connections

(other designs subject to agreement)

## I Magnetic material:

High energy neodymium magnets that remove even the finest metal contaminants are used.

Magnetic material:

Energie product max. 342 kJ/m<sup>3</sup>

Coercive force H<sub>cJ</sub> >= 876 kA/m

Remanence B<sub>r</sub> max. 1370mT

Active surface: max. 1000mT

Operating temperature max. 80°C

## I Product description:

The housing cover disposes of special mounting brackets with drillings to carry the BoxMag separator's weight additionally. As a consequence, the pipe connection can be relieved distinctly and the safe stability is ensured.

The casing itself is designed in such a way that there are no dead spaces within the product range as far as the hygiene and the magnetic monitored field are concerned.

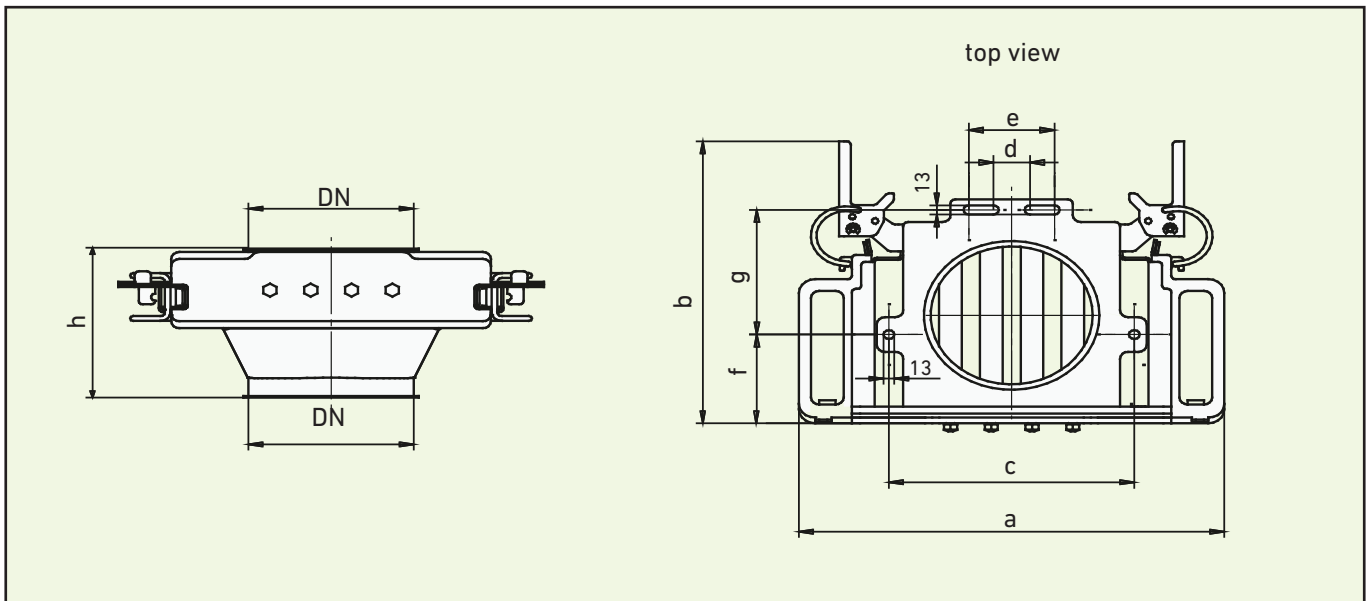
The easy handling is of major importance for the daily routine with the magnetic separator

Therefore the magnetic plug-in unit is equipped with hand grips at its side brackets. These grips are placed within the centre of the plug-in unit – balanced carrying is possible

During the removal or mounting of the magnetic plug-in unit the weight is located on a guide rail at the casing.

The operator's workload is reduced and the plug-in unit is exactly positioned at the same time.

The magnetic plug-in unit is fixed in the casing with quick releases – easy handling without tools.



	DN	magnetic bars	a	b	c	d	e	f	g	h	kg
<b>Type RFM-R-1</b>											
NW 150	150	3	462	380	251	-	105	132	131	215	15,5
NW 200	200	4	512	425	301	45	155	132	176	215	21,5
NW 250	250	5	562	493	351	45	205	132	243,5	215	26,0
NW 300	300	6	612	560	401	45	255	132	288,5	215	30,5

## I Cleaning:

For cleaning purposes the operator opens the side quick releases and pulls the magnetic plug-in unit in the guide rails out of the casing. Only if the unit leaves the guide rails must it hold its weight. It is supported by the hand grips lying laterally at the centre of the plug-in unit.

The operator removes the magnetic plug-in unit from the EasyClean-stripping device outside the product range.

As soon as the plug-in unit is removed, the metallic parts break away and fall off.



## I ATEX:

BoxMag systems have been tested for freedom from ignition sources in accordance with EU Directive 94/9/EC. All machines are also suitable for use in ATEX Zone 20 (dust) provided the design is adapted accordingly.