

## I Applications:

FluidMag separators of series FRM-TD control tubes during the pumping of products like chocolate, nut nougat cream, cocoa or fats – i. e., products that need to be warmed up to reach a good fluidity.

## I Description of functions:

The magnetic separator that is integrated in the pipe line monitors the product flowing through for magnetizable contamination which is attracted by the strong magnetic rods and held tight. Since the system's product chamber is surrounded by a heating jacket, it is possible that the material to be conveyed can maintain the desired processing temperature.

# FluidMag

FRM-TD



## I Product requirements:

The product to be monitored must be liquid or pasty.  
It must not be abrasive!

## I Housing:

Material: 1.4301

Surface:

glass bead blasted outside, ground inside

Connection via tube section according to DIN 11852  
(other designs to be agreed upon)

Water connections 3/4"-socket

Available as an option: cleaning nozzles at the housing bottom, max. operating pressure 6 bar

## I Magnetic material:

High-energy neodymium magnets are used so that small metallic parts can also be seized.

Magnetic substance:

$B_R$ -value max. 1370mT

Effective surface: max. 1000mT

Operating temperature max. 80°C

## I Product description:

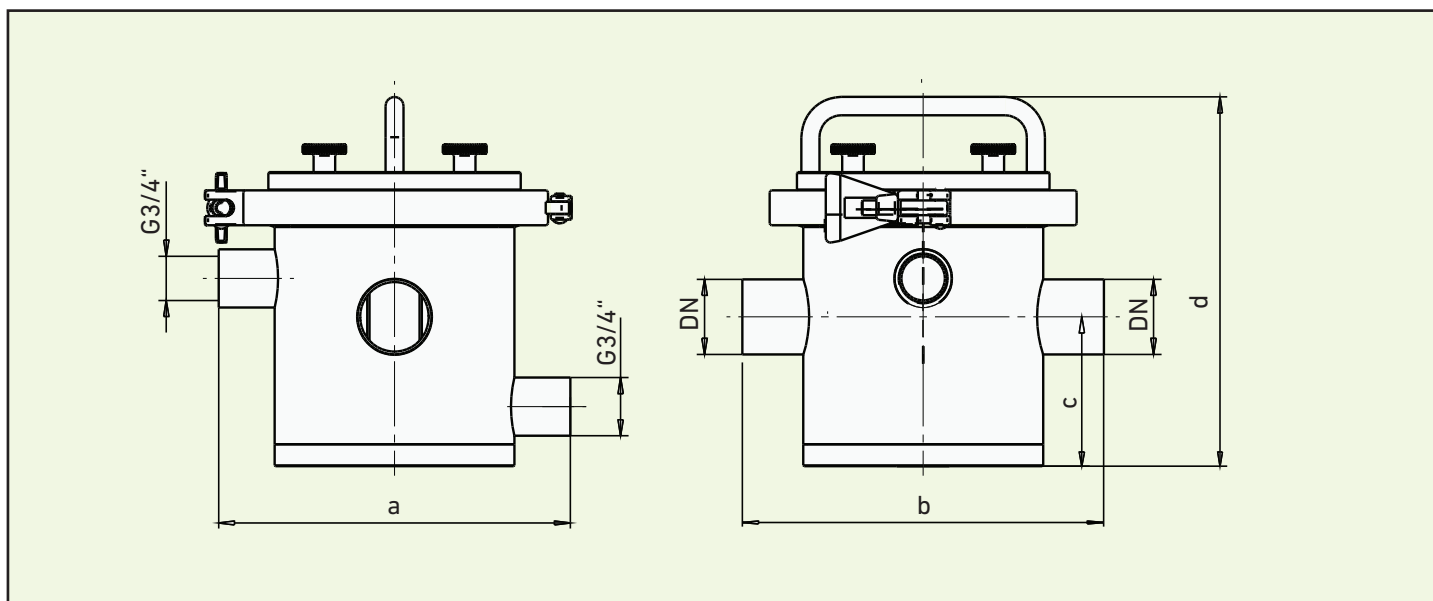
Tube sections of series DIN 11852 for the inlet and for the outlet are used for the connection with the tube pipe system. T

The filter rods in the housing interior are so arranged that the whole tube's cross section is controlled by the magnetic monitoring field. Particles passing by thus hardly have a chance to flow through the magnetic separator without direct contact towards one of the magnetic rods. Seized metallic particles are held tight by the extremely strong neodymium magnetic rods and are not carried away by the product flow.

The magnetic insertion is fixed in the casing by a clamp connection. You do not need any tools for opening the magnetic insertion.

The casing is double-walled. A separate water cycle that circulates in this heating jacket tempers the product chamber and warms up the material to be conveyed.

After the drawing of the magnetic insertion there is no further installed equipment within the casing – this ensures an easy cleaning.



Type FRM-TD	DN	magnetic bars	a	b	c	d	kg
NW 50	50	4	195	200	81,5	210,5	9,0
NW 65	65	4	195	200	81,5	210,5	9,0
NW 80	80	7	-	-	-	-	-
NW 100	100	7	-	-	-	-	-

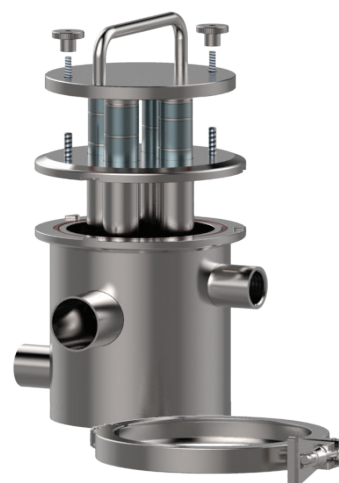
Other dimensions according to prior agreement

## Cleaning:

For cleaning purposes open the clamp of the clamp body connection. The insertion can then be pulled out at the bail handle.

Outside the product range you can detach the two knurled nuts to remove the magnetic insertion from the EasyClean-stripping unit.

As soon as the magnetic insertion is removed, the metallic particles separate from the stripping unit and fall down.



## Operating pressure:

The maximum permissible pressure for the standard design is 6 bar! Higher requirements can be realized in agreement with us.