

I Applications:

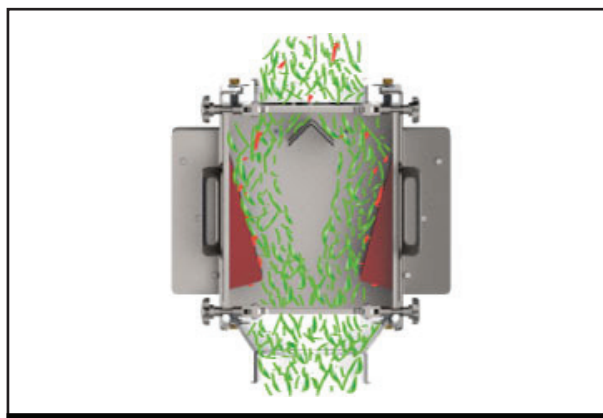
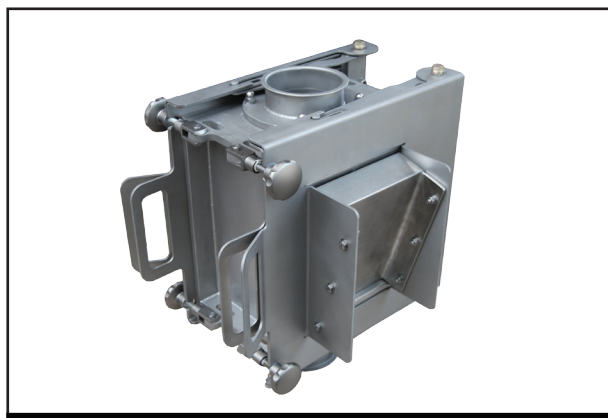
Tube magnets are the perfect means for the separation of magnetizable particles from grainy or fibrous products in pipes. These types of systems are often applied in the food-, feedstuff-, plastics and chemical industry.

I Description of functions:

Two protective magnets (installed on opposite sides) with a large magnetic monitoring depth control the conveying cross section of the tube system to find disturbing metal parts. In order to seize as many magnetizable parts as possible the material flow is directed towards the magnetically active faces by a distribution system. Seized metal parts can easily be removed by the hinged Easy Clean Unit.

Tube Magnet

RSM-R



I Product requirements:

Important for bulk goods:

The product to be monitored must be dry and pourable.

The maximum grain size should not exceed 50 mm.

I Housing:

Material: 1.4301

Surface:

glass bead blasted outside

ground inside

connection via Jacob nozzles

(other designs to be agreed upon)

I Magnetic material:

We use high-energy neodymium magnets making it possible to seize small metallic parts as well.

I Product description:

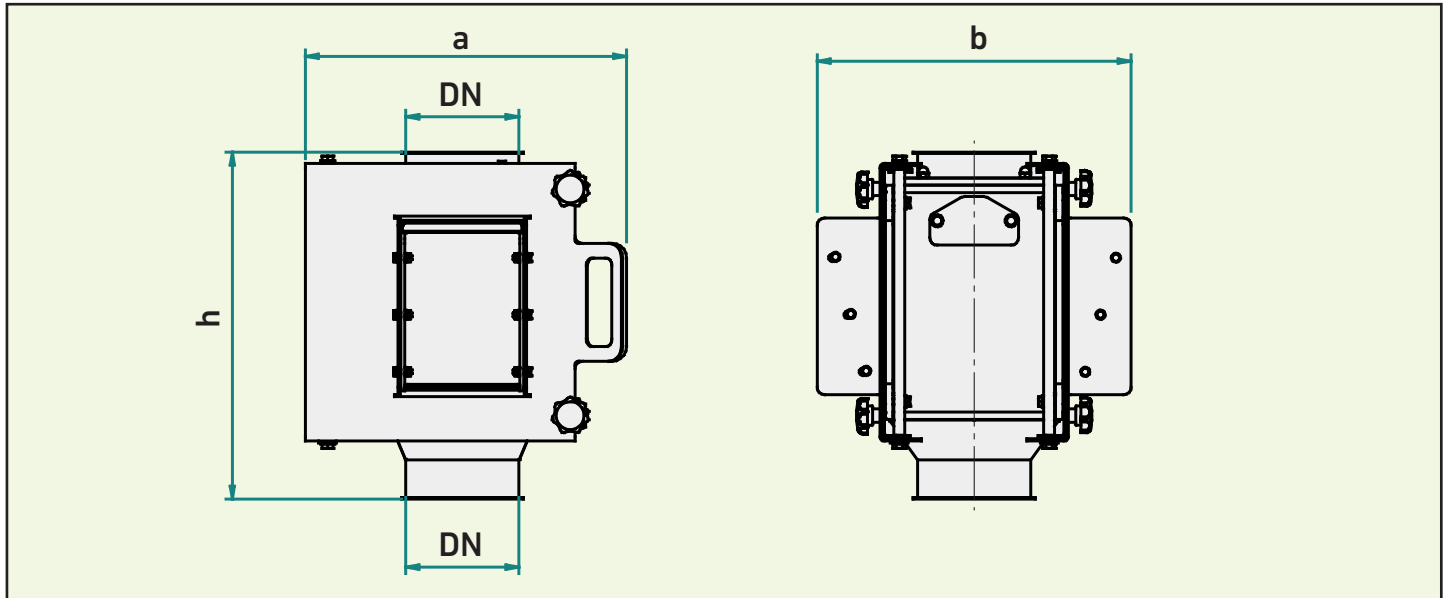
The tube magnet comprises a stainless steel casing with Jacob system connection on inlet end and on outlet end.

The casing cover includes elongated holes where the magnet can additionally be fixed at the steel construction thus ensuring a robust and safe assembly.

The system structure shall make sure that metal particles are led as close as possible towards the pole faces of the plate magnets.

This is why a distribution device will ensure that the product is directed towards the magnets. The protective magnet's pole face is sloped towards the product area. As a consequence the material moves over the magnets' surface thus having sufficient time to hold tight magnetizable particles.

Metal particles that had already been seized cannot be removed by the following product. If metal parts are carried away, they slide along the pole face and get into the drop shadow at the face side of the plate magnet.



Type RSM-R	DN magnetic bars	a	b	h	kg	Type RSM-R
RSM-R 100	100	435	375	470	57,0	RSM-R 100
RSM-R 150	150	435	425	470	60,0	RSM-R 150
RSM-R 200	200	495	495	545	86,0	RSM-R 200
RSM-R 250	250	545	545	543	95,0	RSM-R 250
RSM-R 300	300	605	575	600	128,0	RSM-R 300

I Cleaning:

Open the star grip and swivel the guard door and the support door out of the casing for removing seized metal parts.

The locking mechanism will only release the support door when both doors had been moved out of their working position. You can then release the support door out of the guard door at the handle and continue swiveling. The seized metal parts stick to the EasyClean unit and fall off

The operator need not carry the weight of the magnetic system. The whole weight is carried by the casing.



I ATEX:

The tube-systems have been tested for freedom from ignition sources in accordance with EU Directive 94/9/EC. All machines are also suitable for use in ATEX Zone 20 (dust) provided the design is adapted accordingly.