

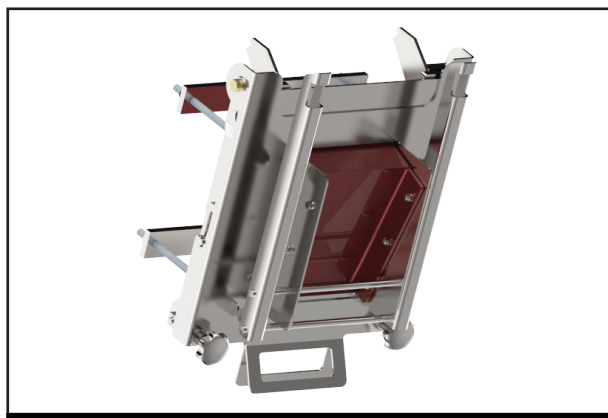
I Applications:

Tube magnets are the perfect means for the separation of magnetizable particles from grainy or fibrous products in shafts. These types of systems are often applied in the food-, feedstuff-, plastics and chemical industry

I Description of functions:

A plate magnet with major monitoring depth – arranged slightly diagonally – controls whether conveyed material contains disturbing metal parts. Since the magnet projects into the shaft, it is more likely that metal parts will directly get into contact with the magnet's surface – the separation quality is distinctly improved. Seized metal parts can easily be removed with the hinged EasyClean Unit.

Shaft Protective Magnet SSM



I Product requirements:

Important for bulk goods:
The product to be monitored must be dry and pourable

I Housing:

Material: 1.4301
Surface:
glass bead blasted outside
ground inside

I Magnetic material:

We use high-energy neodymium magnets making it possible to seize small metallic parts as well.

Other possible permanent magnetic materials are to be agreed upon.

I Product description:

Shaft magnets of series SSM can easily be installed into an already existing shaft without any additional welding work.

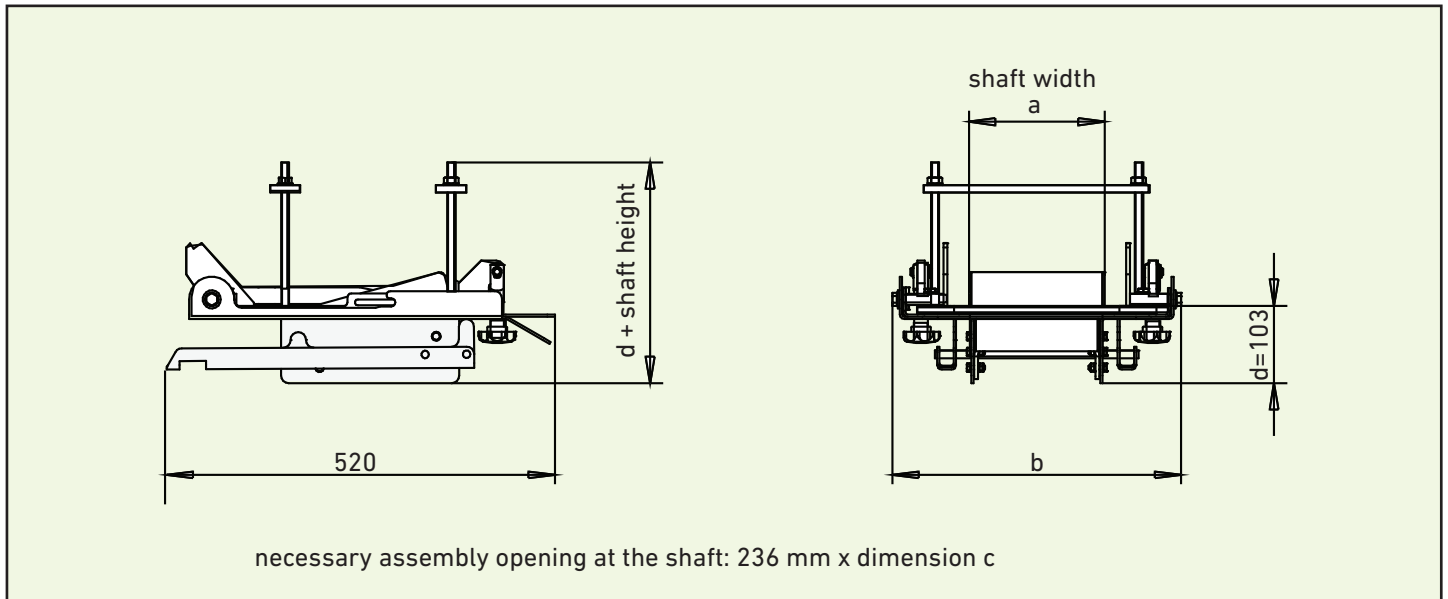
A plate magnet with major monitoring depth – arranged slightly diagonally – controls whether conveyed material contains magnetizable disturbing metallic particles.

This arrangement of the magnet has significant advantages:

It is more likely that metallic particles will directly get into contact with the magnet's surface.

There, the attraction forces of the plate magnet is stronger than somewhere else. The control quality is distinctly improved.

In addition metal particles that had already been seized cannot be removed by the following product. If metal parts are carried away, they slide along the pole face and get into the drop shadow at the face side of the plate magnet.



Type SSM	a	b	c	kg	Type SSM
200	200	383	182	42,0	200
250	250	434	233	47,0	250
300	300	485	284	51,5	300
350	350	536	335	57,0	350
400	400	587	386	61,5	400
450	450	638	437	66,5	450

I Cleaning:

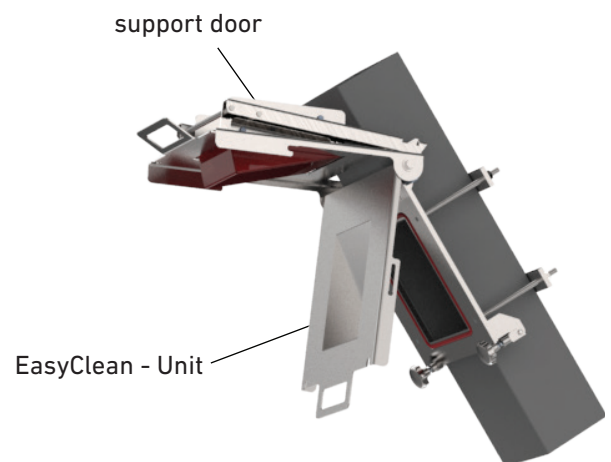
Open the star grips and swivel the EasyClean Unit and support door out of the casing to remove the seized metal parts.

The special locking mechanism releases the support door only when both doors are moved sufficiently out of their working position. Consequently, metallic particles will not fall back into the shaft unintentionally.

You can then dissolve the support door out of the EasyClean Unit at its handgrip and put it into the end position.

It will be locked mechanically there – the user does not need to hold the weight!

The seized metal parts stick to the EasyClean unit and fall off.



I ATEX:

Shaft Protective Magnets have been tested for freedom from ignition sources in accordance with EU Directive 94/9/EC. All machines are also suitable for use in ATEX Zone 20 (dust) provided the design is adapted accordingly.